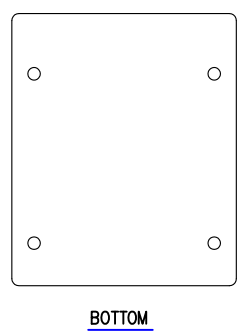
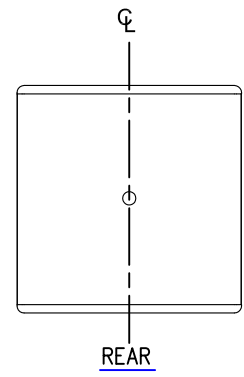
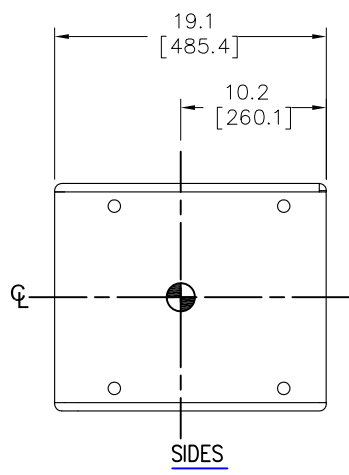
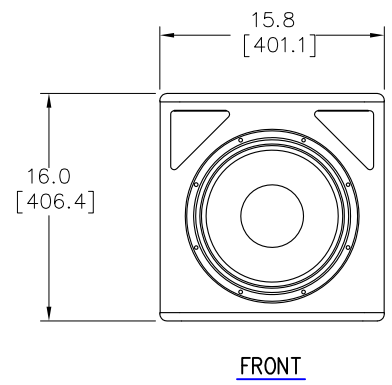
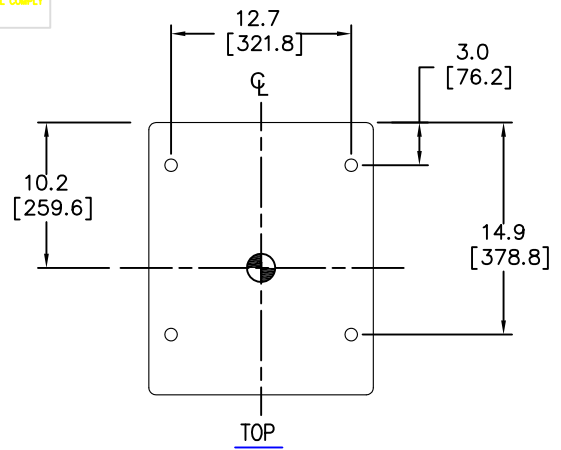


THESE DRAWINGS AND SPECIFICATIONS ARE THE PROPERTY OF JBL INCORPORATED. THEY ARE ISSUED IN STRICT CONFIDENCE AND SHALL NOT BE REPRODUCED OR USED AS THE BASIS FOR MANUFACTURE OR APPARATUS WITHOUT WRITTEN PERMISSION.

ALL MATERIAL SPECIFIED ON THIS DRAWING SHALL COMPLY WITH EUROPEAN DIRECTIVE 2002/95/EC. **REHS**

REVISIONS						
CHG	LTR	DESCRIPTION	DRAFT	D.C	DATE	APPR
02084	A	RELEASE TO MARKETING	TH			



8. CENTER OF GRAVITY (CG)
7. WEIGHT: 16.3 Kg (36.0 LBS).
6. SUSPENSION POINTS: M10 THREADED SUSPENSION POINTS. 4X TOP, 4X BTM, 4X LEFT, 4X RIGHT. BOLT HEAD EXTEND APPROX. 0.34" ABOVE SURFACE OF ENCLOSURE.
5. COMPONENTS: LF - 1X 2263H
4. INPUT: SEALED GLANDNUT WITH 20' 2 CONDUCTOR CAPTIVE CABLE.
3. GRILLE: 14 GA. PERFORATED STAINLESS STEEL WITH STAINLESS STEEL VAPOR BARRIER.
2. MATERIALS: 15MM BIRCH PLYWOOD.
1. FINISH: 0.060" GRAY THICK COARSE TEXTURE FIBERGLASS (NOT REFLECTED ON DIMENSIONS ABOVE). (WHITE AND BLACK AVAILABLE AT NO EXTRA COST).

NOTES: (UNLESS OTHERWISE SPECIFIED)

TOLERANCES (UNLESS OTHERWISE SPECIFIED)	
X.XX	± .063 INCH
X.X	± .125 INCH
ANGULAR TOLERANCE OF 0°±30'	
FRACTIONAL DIMENSIONS ± 1/32	
• DIMENSIONS ARE INCHES	
• ALL DIMENSIONS ARE FINISHED DIMENSIONS	
• DO NOT SCALE DRAWING	

JBL PROFESSIONAL A Harman International Company Northridge, California 91329 U.S.A.	
TITLE CUSTOMER DRAWING: ASB6112-WRX	
SIZE A	DRAWING NO. 1000066459
SCALE NTS	REV A
SHEET 1 OF 1	